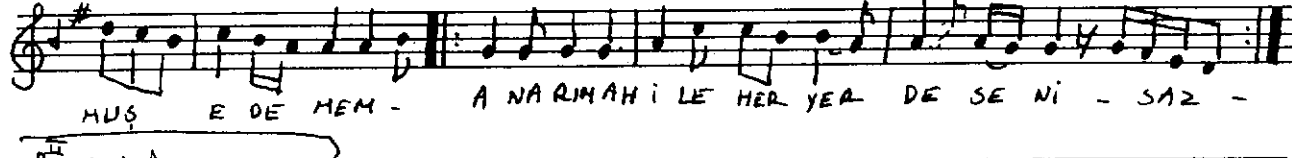
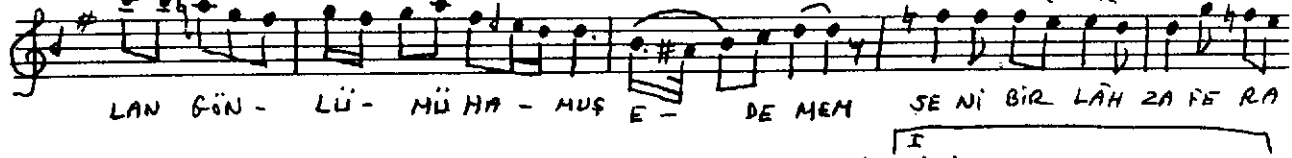
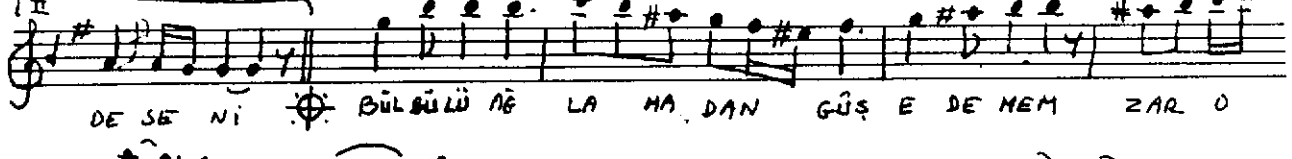
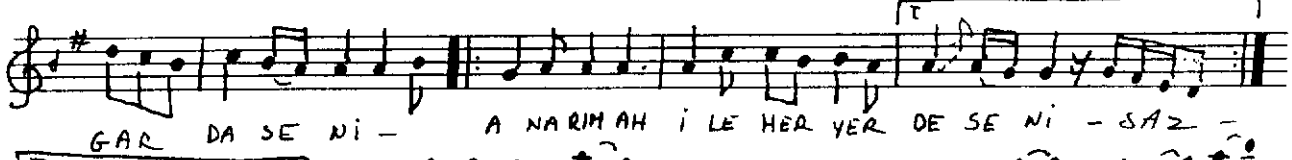
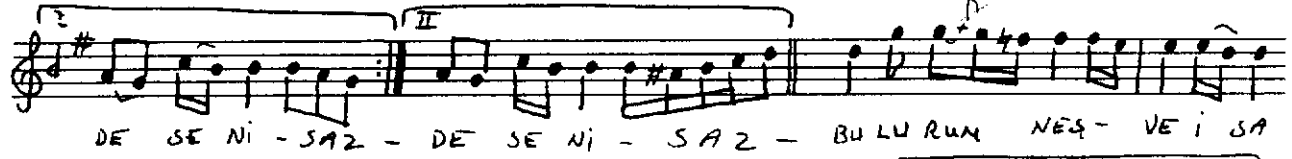


RAST ŞARKI
"Saklayıp kalb-i mübedderde seni"

Söz : Recaizade M. Ekrem
Müzik : Ö. Phani Turan

Hüsemmen (♩=140)



13 MAYIS 1991 K. YAKA-İZMİ

Ö. Phani Turan

SAKLAYIP KALB-I MÜBEDDERDE SENİ
ANARIM AH İLE HER YERDE SENİ
BULURUM NEŞVE-İ SÂFARDA SENİ
ANARIM AH İLE HER YERDE SENİ

TURHAN TAŞAN
NOTA ARŞİVİ

BÜLBÜLÜ AĞLANADAN GÜŞ EDEMEN
ZÂR OLAN GÖNLÜNÜ HÂMUŞ EDEMEN
SENİ BİR LÂHZA FERÂMUŞ EDEMEN
ANARIM HER YERDE SENİ
AH İLE